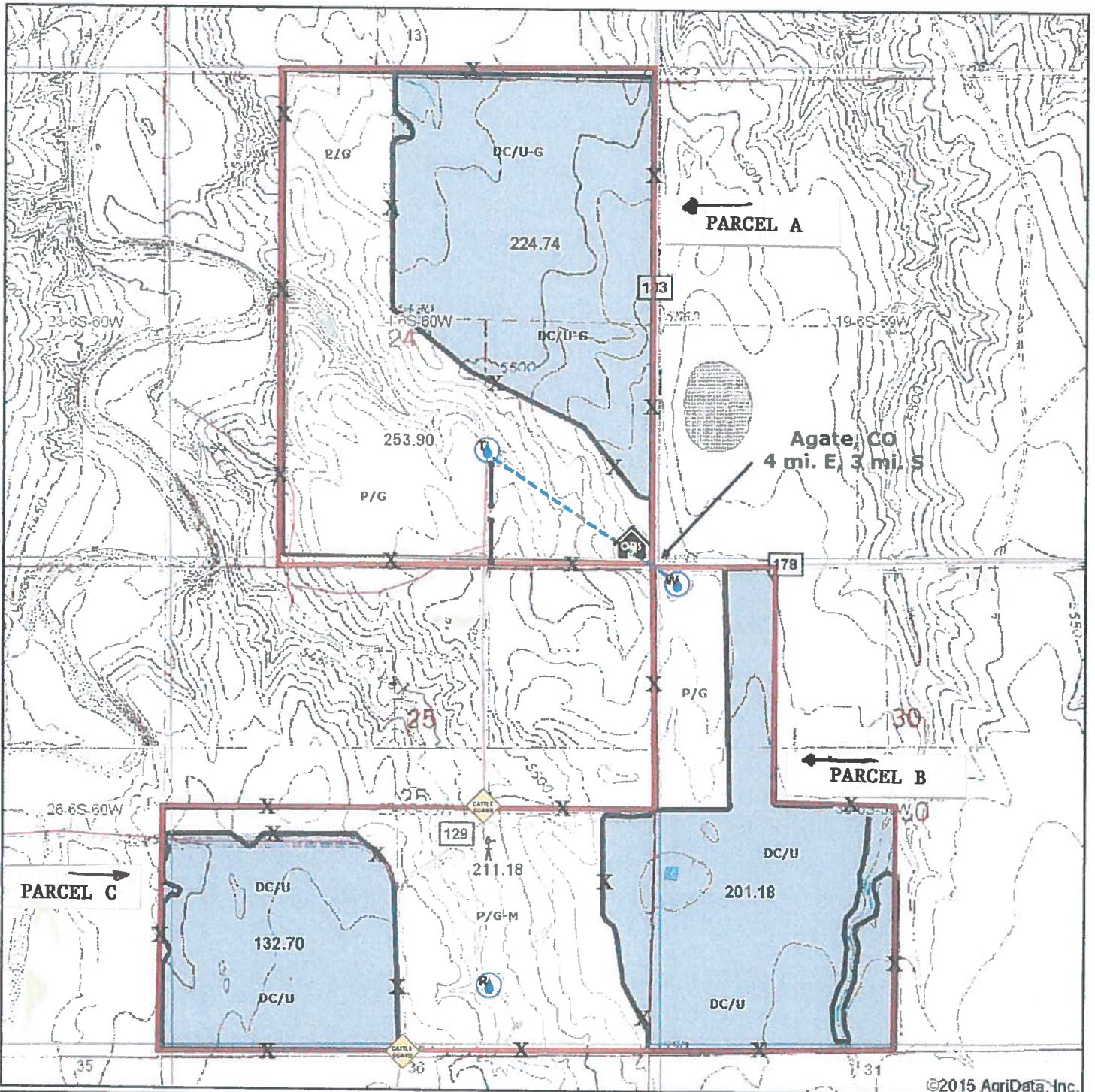


# Topography Map



©2015 AgriData, Inc.

**FARM CREDIT**  
OF SOUTHERN COLORADO

Maps Provided By:

**surety**  
CUSTOMIZED ONLINE MAPPING  
© AgriData, Inc. 2014 www.AgriDataInc.com

**24-6S-60W**  
**Elbert County**  
**Colorado**

map center: 39° 30' 20.71, 104° 3' 6.14  
scale: 19212



2/3/2015

Field borders provided by Farm Service Agency as of 5/21/2008. Aerial photography provided by Aerial Photography Field Office.



**Common Land Unit**  
 Cropland    Non-cropland    CRP

**Farm 1049**  
**Tract 1304**

**Wetland Determination Identifiers**

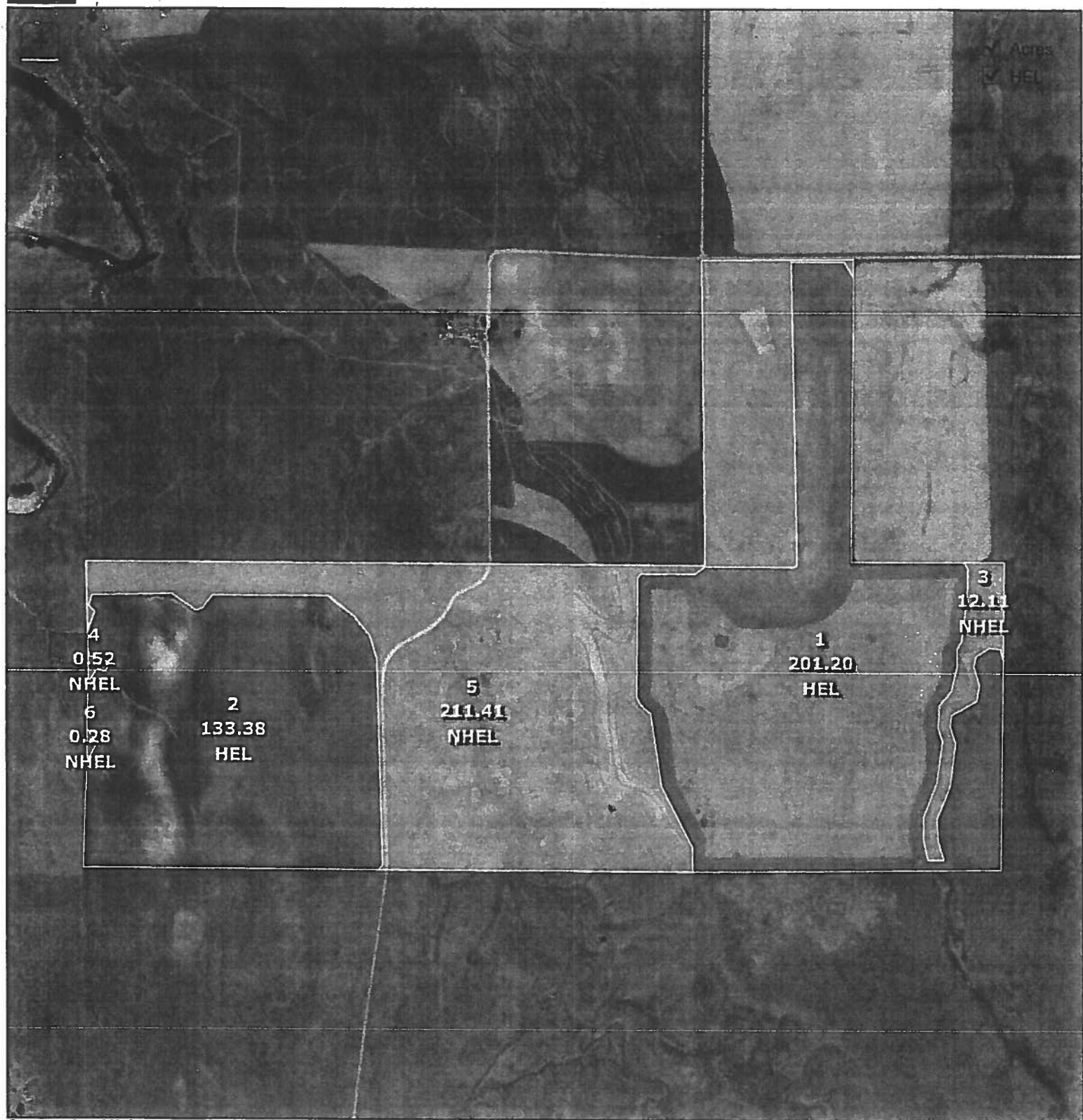
- Restricted Use
- ◻ Limited Restrictions
- ▣ Exempt from Conservation Compliance Provisions

**2016 Crop Year**



Tract Page: 1 of 1

United States Department of Agriculture (USDA) Farm Service Agency (FSA) maps are for FSA Program administration only. This map does not represent a legal survey or reflect actual ownership; rather it depicts the information provided directly from the producer and/or National Agricultural Imagery Program (NAIP) imagery. The producer accepts the data 'as is' and assumes all risks associated with its use. USDA-FSA assumes no responsibility for actual or consequential damage incurred as a result of any user's reliance on this data outside FSA Programs. Wetland identifiers do not represent the size, shape, or specific determination of the area. Refer to your original determination (CPA-026 and attached maps) for exact boundaries and determinations or contact USDA Natural Resources Conservation Service (NRCS).



Common Land Unit  
 Cropland    Non-cropland    CRP

Wetland Determination Identifiers  
 ● Restricted Use  
 ◐ Limited Restrictions  
 ■ Exempt from Conservation Compliance Provisions

2016 Crop Year



Farm 1049  
 Tract 1305

Tract Page: 1 of 1

United States Department of Agriculture (USDA) Farm Service Agency (FSA) maps are for FSA Program administration only. This map does not represent a legal survey or reflect actual ownership; rather it depicts the information provided directly from the producer and/or National Agricultural Imagery Program (NAIP) imagery. The producer accepts the data 'as is' and assumes all risks associated with its use. USDA-FSA assumes no responsibility for actual or consequential damage incurred as a result of any user's reliance on this data outside FSA Programs. Wetland identifiers do not represent the size, shape, or specific determination of the area. Refer to your original determination (CPA-026 and attached maps) for exact boundaries and determinations or contact USDA Natural Resources Conservation Service (NRCS).